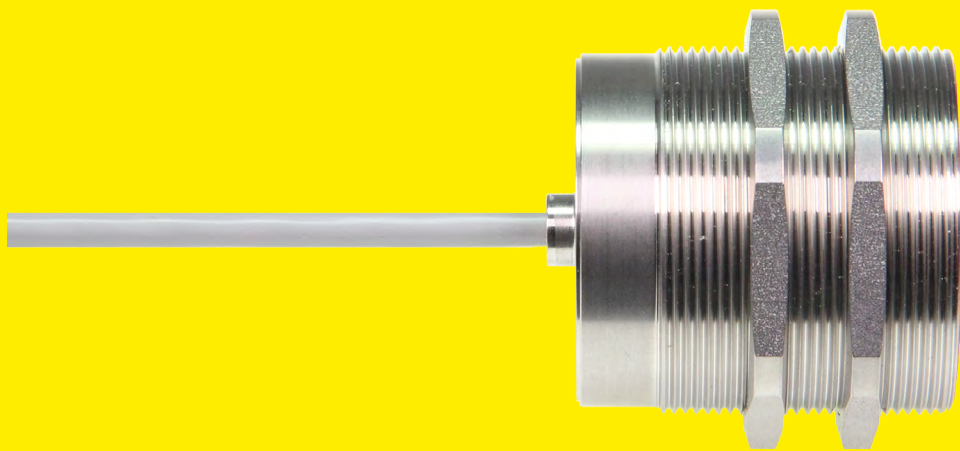
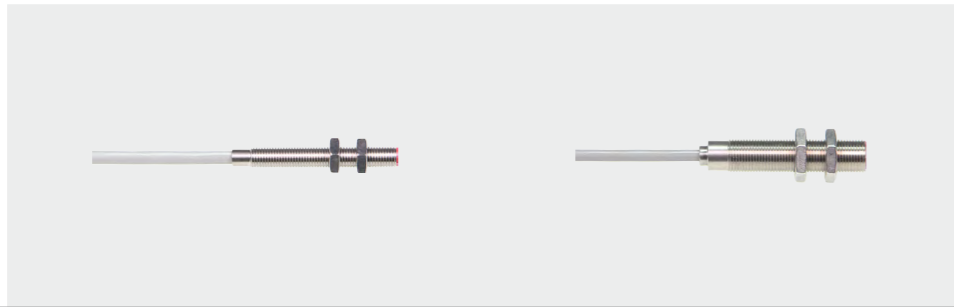


Inductive proximity switches

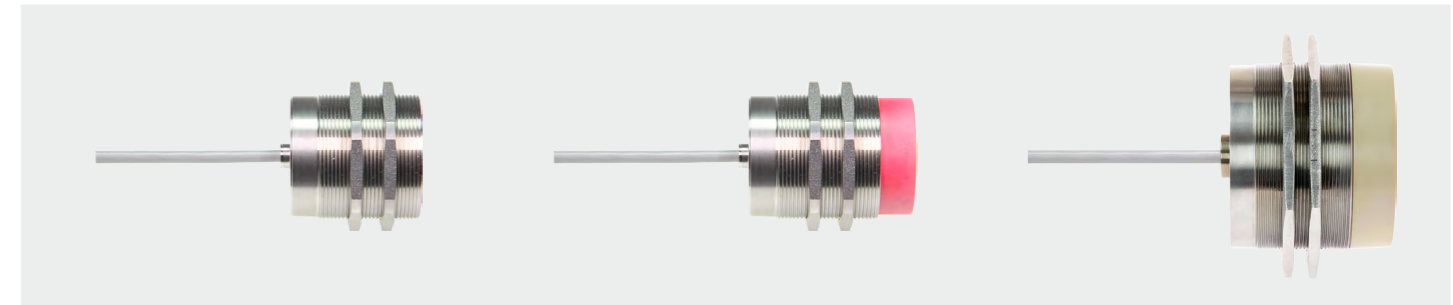
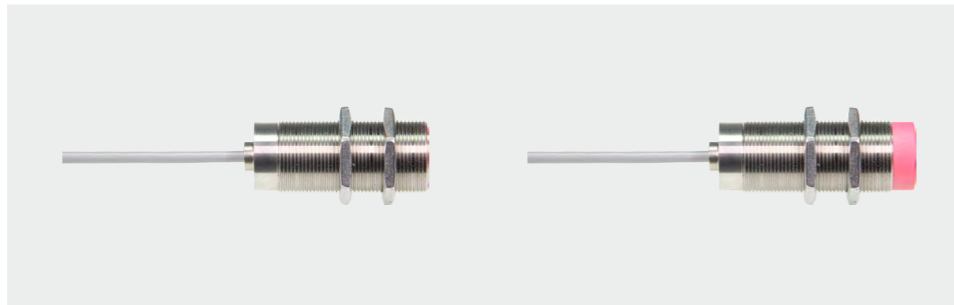
PROXI HT^{+c} High Temperature

130 °C - 150 °C - 175 °C - 200 °C - 230 °C





| Sensing distance Sn (mm) | 2 | 3 | 4 | 5 | 8 |
|---------------------------------------|--------------------------|----------------------|-----------------|-----------------|-----------------|
| Mounting | flush | flush | non flush | flush | non flush |
| Housing size [mm] | M8 / L = 60 | M12 / L = 60 | M12 / L = 65 | M18 / L = 76 | M18 / L = 83 |
| Housing material | stainless steel | stainless steel | stainless steel | stainless steel | stainless steel |
| Protection class | IP 66 | IP 66 | IP 66 | IP 66 | IP 66 |
| IP 67 protection class available (IP) | no | no | no | yes | yes |
| 100% silicone-free available (SF) | no | yes | yes | yes | yes |
| Type with in-built electronics | IKZ 082 | IKZ 122 | IKZ 121 | IKZ 182 | IKZ 181 |
| Up to +130 °C with LED (H2) | without LED up to 140 °C | no | no | yes | yes |
| Up to +150 °C (H3) | no | yes | yes | yes | yes |
| Up to +175 °C (H4) | no | no | no | yes | yes |
| Type with external electronics | - | IKZ 129 | - | IKZ 188 | IKZ 186 |
| Up to +200 °C (H5) | no | yes (Sn= 2 mm flush) | no | no | no |
| Up to +230 °C (H6) | no | no | no | yes | yes |



| Sensing distance Sn (mm) | 10 | 15 | 20 | 25 | 50 |
|---------------------------------------|-----------------|-----------------|-----------------|-----------------|-----------------|
| Mounting | flush | non flush | flush | non flush | non flush |
| Housing size [mm] | M30 / L = 76 | M30 / L = 85 | M50 / L = 54 | M50 / L = 68 | M80 / L = 72 |
| Housing material | stainless steel | stainless steel | stainless steel | stainless steel | stainless steel |
| Protection class | IP 66 | IP 66 | IP 66 | IP 66 | IP 66 |
| IP 67 protection class available (IP) | yes | yes | yes | yes | yes |
| 100% silicone-free available (SF) | yes | yes | yes | yes | yes |
| Type with in-built electronics | IKZ 302 | IKZ 301 | IKZ 506 | IKZ 505 | IKZ 801 |
| Up to +130 °C with LED (H2) | yes | yes | yes | yes | yes |
| Up to +150 °C (H3) | yes | yes | yes | yes | yes |
| Up to +175 °C (H4) | yes | yes | yes | yes | no |
| Type with external electronics | IKZ 306 | IKZ 307 | IKZ 508 | IKZ 507 | IKZ 807 |
| Up to +200 °C (H5) | no | no | no | no | yes |
| Up to +230 °C (H6) | yes | yes | yes | yes | no |

- PROXI Polar**^{-°C} Proxitron low-temperature series for temperatures from -40 °C available for many designs.
- PROXI Heat**^{+°C} Proxitron high-temperature series for temperatures of up to +120 °C available for many designs.
- PROXI PTFE** Proxitron sensors with PTFE housing for chemically aggressive environments. See "Inductive sensors PTFE housing" brochure
- PROXI Plus** Product line extension with increased switching distance in existing housing design. See "ProxiPlus" brochure.

The sensing distance Sn describes the axial approaching of a square steel plate with its side length equal to three times the sensing distance. (for example: Sensing distance 50 mm relates to a steel plate with side length of 150 x 150 mm). Smaller metal object reduces the maximum attainable sensing distance. The attainable sensing distance is a function of the material of the metal object and can be calculated using the correction factor:

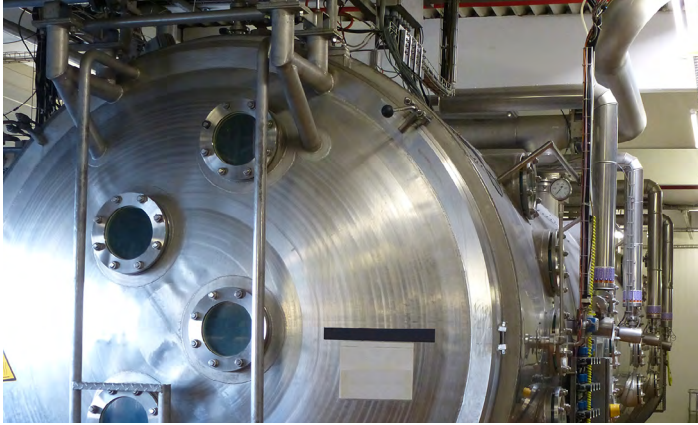
max. possible sensing distance = sensing distance x correction factor

| material | metal foil | steel | stainless steel | brass | aluminium | copper | nickel | cast iron |
|-------------------|------------|-------|-----------------|-------|-----------|--------|--------|---------------|
| correction factor | 1,2 | 1 | 0,5 ... 0,8 | 0,45 | 0,4 | 0,3 | 0,7 | 0,93 ... 1,05 |

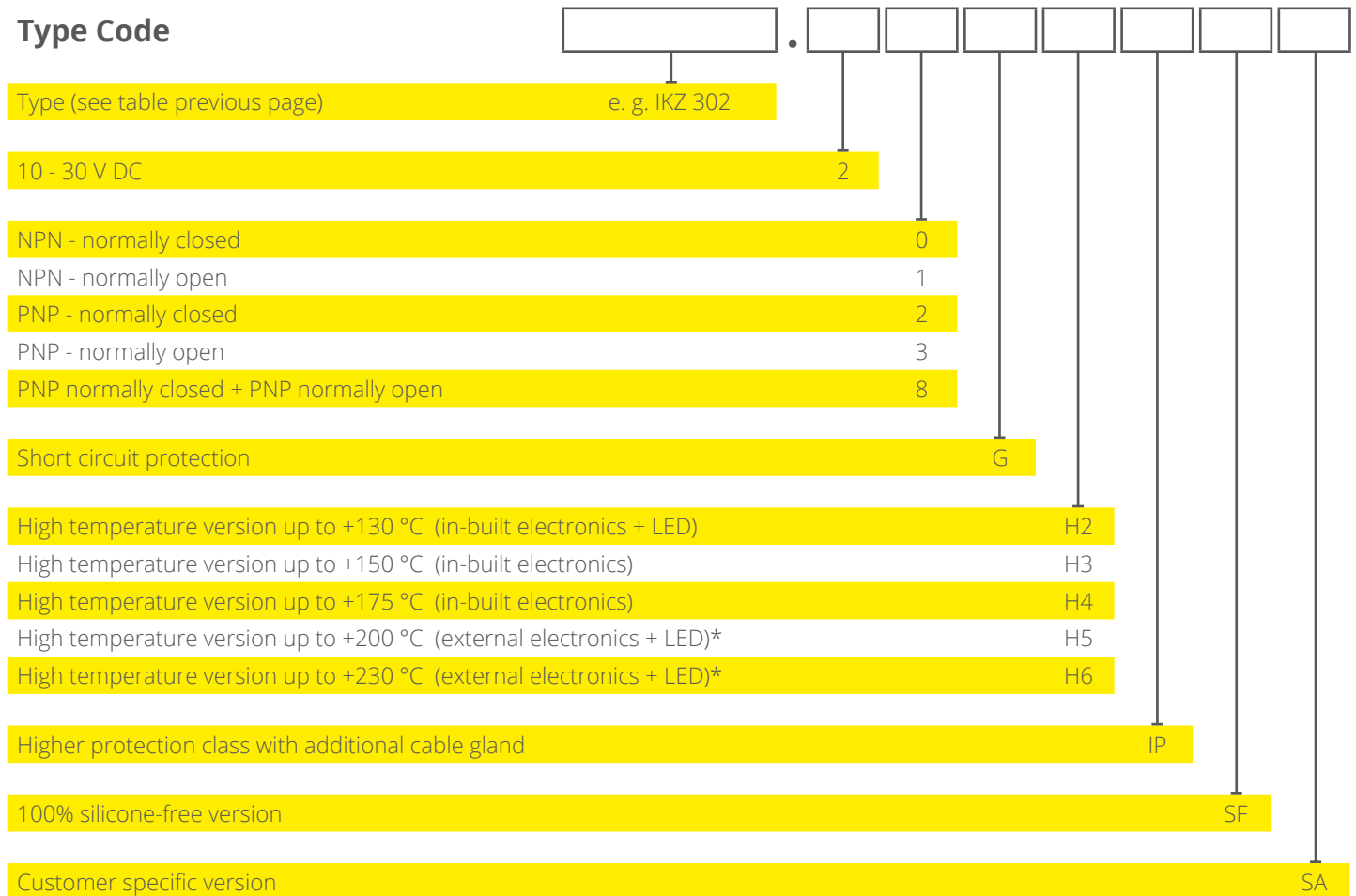
General Information - Inductive Proximity Switches

Proximity switches for ambitious applications in high temperature areas. Proxitron offers a variety of different temperature ranges, housing designs and sensing ranges for different applications e.g. steel industry, glass, furnace construction, paint shops in automotive industry, presses for chipboard manufacturing, drying section in papermaking, food industry. Connection cables are available in standard lengths of 2, 5, 10, 15 and 20 m made of silicone and PTFE

- **Contactless detection of metal objects**
- **Unaffected by contamination**
- **Various switching outputs**
- **Up to +130 °C with LED**
- **Up to +175 °C with in-built electronics**
- **Up to +230 °C with external electronics**
- **Silicone or PTFE cable**
- **IP 67 protection class available**
- **100% silicone-free version available**



Type Code



* The external electronics, in separate M12 stainless steel housing, is connected to the sensing head via a fixed PTFE cable (lengths up to 30 m available). The electronics is then provided with a PUR cable, and is resistant up to 70 °C.